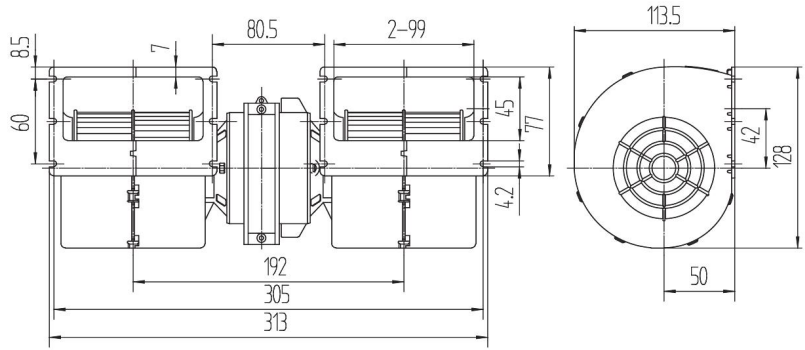
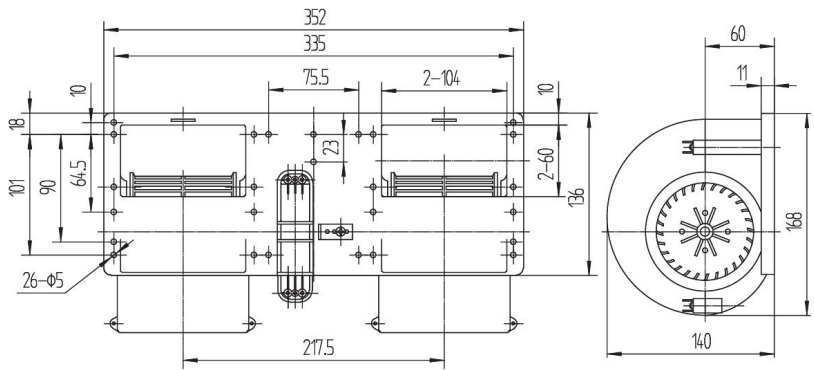


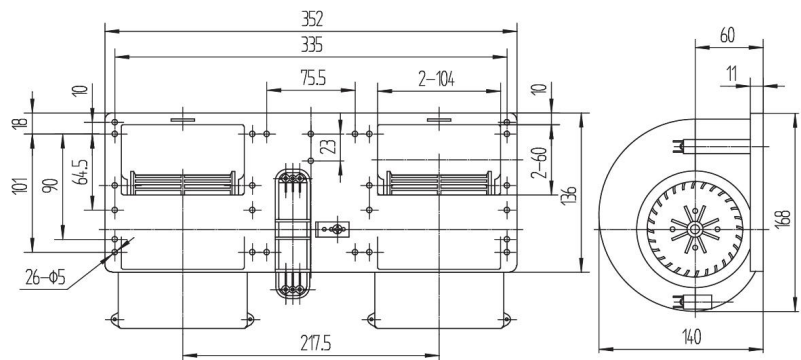
型号 MODEL	风量 (m³/h) AIRFLOW	压差 (Pa) STATIC PRESSURE	额定电压 (V) VOLTAGE	电流 (A) CURRENT	转速 (rpm) SPEED	备注 REMARKS
KB121R	660	100	12	≤ 18	≥ 4500	Φ 86×86
KB241R	660	100	24	≤ 8.5	≥ 4500	Φ 86×86



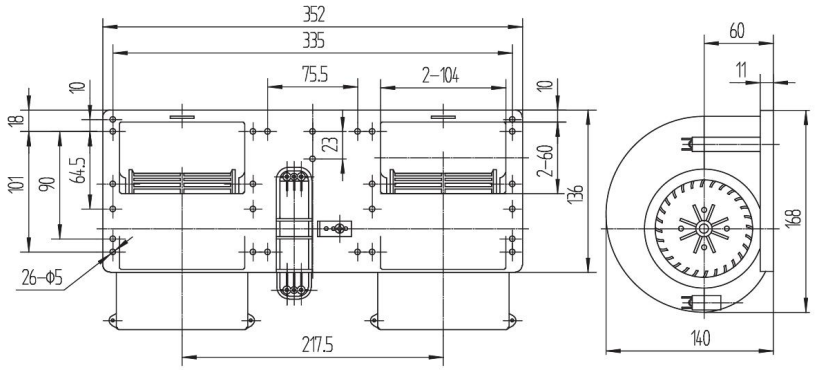
型号 MODEL	风量 (m³/h) AIRFLOW	压差 (Pa) STATIC PRESSURE	额定电压 (V) VOLTAGE	电流 (A) CURRENT	转速 (rpm) SPEED	备注 REMARKS
KB124	1000	100	12	≤ 24	≥ 3800	Φ 105×89
KB244	1000	100	24	≤ 11	≥ 3800	Φ 105×89



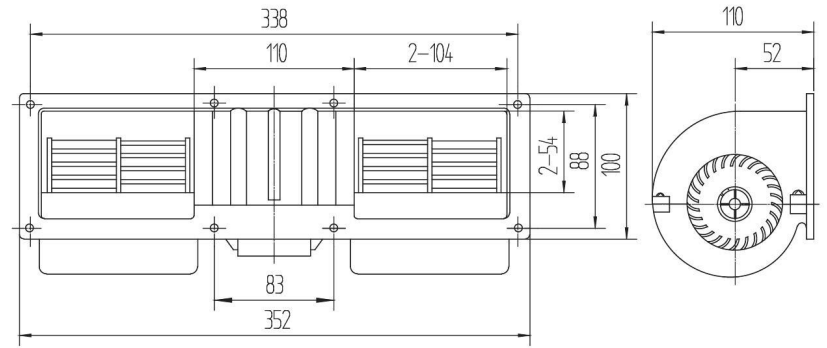
型号 MODEL	风量 (m³/h) AIRFLOW	压差 (Pa) STATIC PRESSURE	额定电压 (V) VOLTAGE	电流 (A) CURRENT	转速 (rpm) SPEED	备注 REMARKS
KB124R	1000	100	12	≤ 24	≥ 3800	Φ 105×89
KB244R	1000	100	24	≤ 11	≥ 3800	Φ 105×89



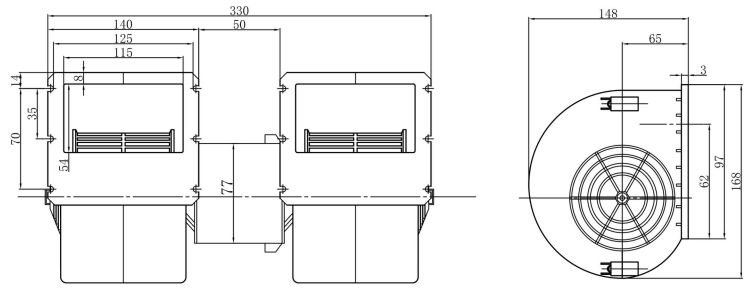
型号 MODEL	风量 (m³/h) AIRFLOW	压差 (Pa) STATIC PRESSURE	额定电压 (V) VOLTAGE	电流 (A) CURRENT	转速 (rpm) SPEED	备注 REMARKS
KB124H	1000	400	12	≤ 40	≥ 5000	Φ 105 × 89
KB244H	1000	400	24	≤ 20	≥ 5000	Φ 105 × 89



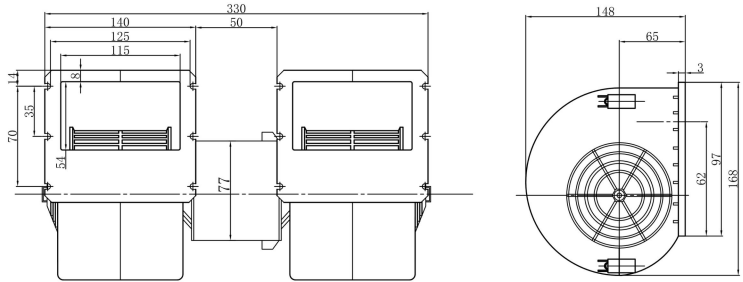
型号 MODEL	风量 (m³/h) AIRFLOW	压差 (Pa) STATIC PRESSURE	额定电压 (V) VOLTAGE	电流 (A) CURRENT	转速 (rpm) SPEED	备注 REMARKS
KB1261R	600	100	12	≤ 12	≥ 3500	Φ 82 × 96
KB2461R	600	100	24	≤ 6	≥ 3500	Φ 82 × 96



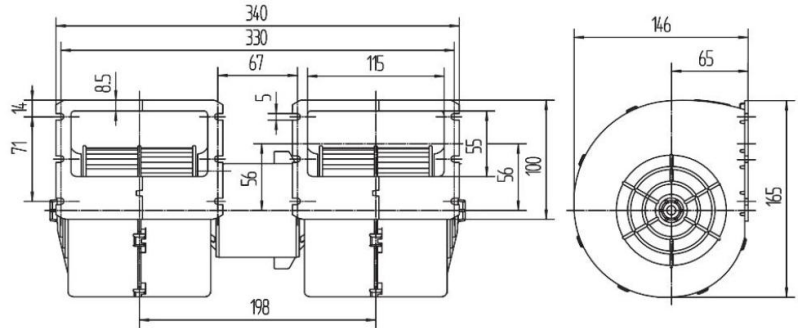
型号 MODEL	风量 (m³/h) AIRFLOW	压差 (Pa) STATIC PRESSURE	额定电压 (V) VOLTAGE	电流 (A) CURRENT	转速 (rpm) SPEED	备注 REMARKS
KB182	800	100	12	≤ 18	≥ 3800	Φ 105 × 89
KB282	800	100	24	≤ 9	≥ 3800	Φ 105 × 89



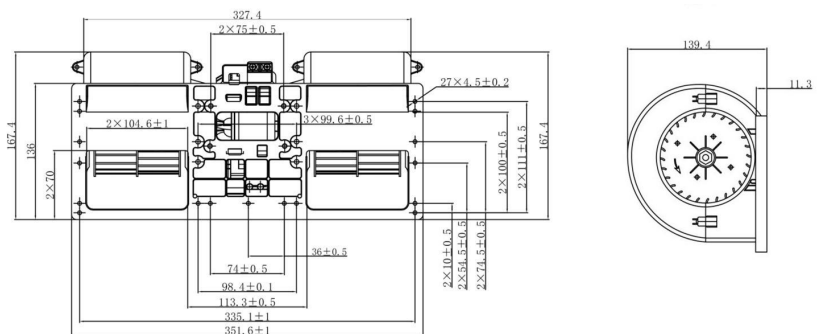
型号 MODEL	风量 (m³/h) AIRFLOW	压差 (Pa) STATIC PRESSURE	额定电压 (V) VOLTAGE	电流 (A) CURRENT	转速 (rpm) SPEED	备注 REMARKS
KB182R	800	100	12	≤ 18	≥ 3800	Φ 105 × 89
KB282R	800	100	24	≤ 9	≥ 3800	Φ 105 × 89



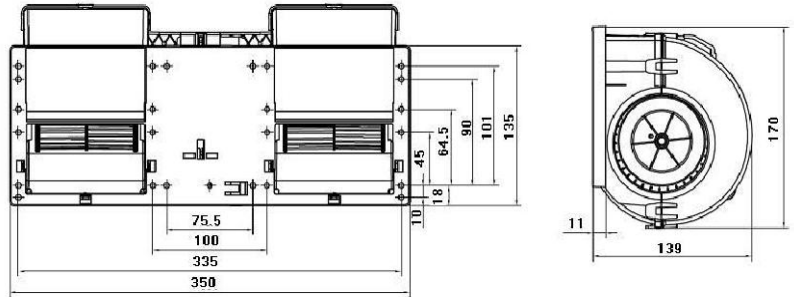
型号 MODEL	风量 (m³/h) AIRFLOW	压差 (Pa) STATIC PRESSURE	额定电压 (V) VOLTAGE	电流 (A) CURRENT	转速 (rpm) SPEED	备注 REMARKS
KB182L	1000	100	12	≤ 24	≥ 3800	Φ 105 × 89
KB282L	1000	100	24	≤ 11	≥ 3800	Φ 105 × 89



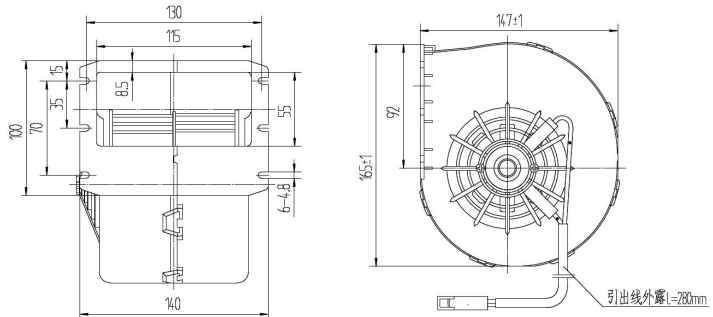
型号 MODEL	风量 (m³/h) AIRFLOW	压差 (Pa) STATIC PRESSURE	额定电压 (V) VOLTAGE	电流 (A) CURRENT	转速 (rpm) SPEED	备注 REMARKS
KBRL358	1200	100	24	≤ 15	≥ 4500	无刷 (Brushless)



型号 MODEL	风量 (m³/h) AIRFLOW	压差 (Pa) STATIC PRESSURE	额定电压 (V) VOLTAGE	电流 (A) CURRENT	转速 (rpm) SPEED	备注 REMARKS
KBRL124R	850	100	12	≤ 20	≥ 3000	无刷 (Brushless)
KBRL244R	950	100	24	≤ 10	≥ 3300	无刷 (Brushless)
KBRL484R	950	100	48	≤ 5.6	≥ 3300	无刷 (Brushless)



型号 MODEL	风量 (m³/h) AIRFLOW	压差 (Pa) STATIC PRESSURE	额定电压 (V) VOLTAGE	电流 (A) CURRENT	转速 (rpm) SPEED	备注 REMARKS
KB166R	400	100	12	≤ 12	≥ 3300	∅113×111
KB266R	400	100	24	≤ 6	≥ 3300	∅113×111



型号 MODEL	风量 (m³/h) AIRFLOW	压差 (Pa) STATIC PRESSURE	额定电压 (V) VOLTAGE	电流 (A) CURRENT	转速 (rpm) SPEED	备注 REMARKS
KB167WR	260	100	12	≤ 10	≥ 2500	∅86×86
KB267WR	260	100	24	≤ 5	≥ 2500	∅86×86

